

## Technical Data BA90IP

Performances	rps	60	60	90	120	60
		<b>A7W35</b>	<b>A2W35</b>	<b>A-7W35</b>	<b>A-15W35</b>	<b>A7W55</b>
Heating Capacity	kW	26,18	20,60	24,81	30,00	23,60
Cooling Capacity	kW	21,26	15,83	16,90	18,90	16,53
Power In	kW	5,32	5,17	8,41	11,70	7,47
COP	-	4,92	3,99	2,95	2,56	3,16
Operating Current	A	11,0	10,7	17,4	24,2	15,5

### Compressor

Type	BLDC Inverter		
Speed	15-120	1/s	
Oil	RFL68EP	2,51	l
LRC	-		A
Max. Op. Current	35		A

### Evaporator

Type	Coil		
Material	Al/Cu		
Heat Transfer Area	84	m <sup>2</sup>	
Fin Spacing	2	mm	
Max Overpressure	3	Mpa	
Air Flow	max.15000	m <sup>3</sup> /h	
Fan Motor	max. 0,7	kW	
Fan Diameter	2x630	mm	
Speed	max.900	1/min	
Sound Power Level	62	dB"A"	
Defrost	reversal		

### Condenser

Type	PHE		
Material	AISI316		
Water Flow	1,25	kg/s	
Minimum flow	0,63	kg/s	
Temp. Difference	5	K	
Water volume	7,0	l	
Max. Water Overp.	250	kPa	
Max. Ref. Overp.	3	MPa	
Pump Ext. Head	4,0	m	
Pump Motor	310	W	

### Refrigerant Circuit

Refrigerant	R290		
Charge	3,5	kg	
PHE leak protection**	35% Propylene Glycol		
R290 leakage sensor	Yes		

\*\* IEC 60335-2-40:2022, OBLIGATORY USE

### Aux. Heater

Heating Capacity	15+(15)	kW
------------------	---------	----

### Controls

Controller	pCO5
EEV	Yes
Water Probe	Yes
SHW Probe	Yes
Outdoor Probe	Yes
Dynamic Set Point	Yes
Refrigerant Probe	2xPT

### Power Supply

Voltage	3x400	V
Frequency	50	Hz
Max. Current C (H)	40(60)	A

### Connections and Dimensions

Hot Water	1	"OD
He x Le x Wi	168x206x104	cm
Weight	275	kg

### Limits

Water Overpressure	0,25	MPa
Ref. Overpressure	3,1	MPa
Air Min/Max	-20/+35	°C
Water Min/Max	20/75	°C

\*A2W35, acc. to EN14511, condenser dT=5K

"A2" Air Inlet +2°C

"W35" Water Outlet 35°C

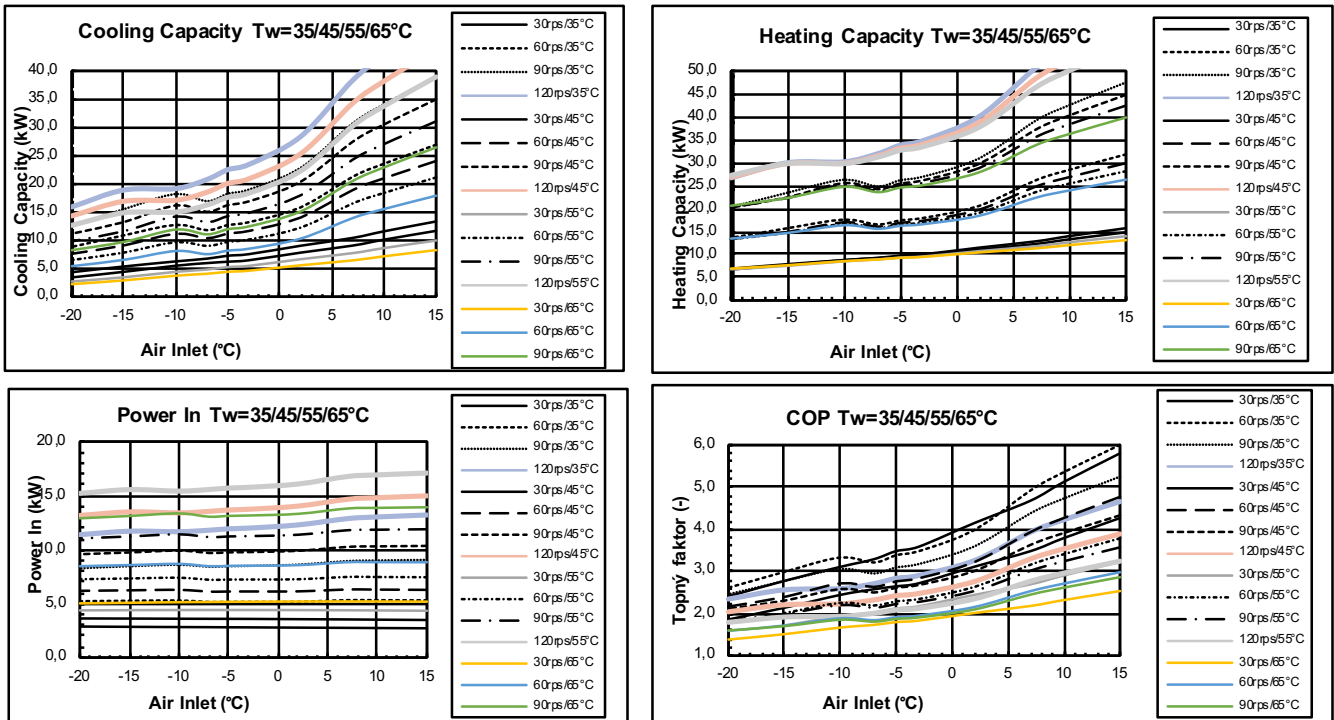
Defrost energy considered.

Performance Tolerance EN14511

Ecodesign	35°C	55°C
Pdesign	29,40	29,14 kW
SCOP	4,68	3,55 -
ETAs	184	139 %
Rating	A+++	A++

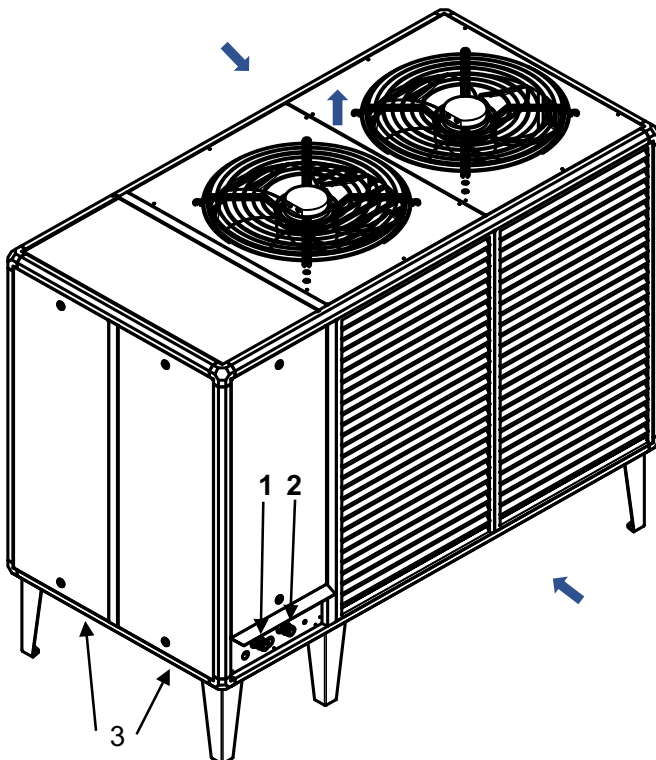
## Technical Data BA90IP

### Performance \*



\* Performance Tolerance  $\pm 5\%$ , defrost energy included

### Dimensions, Connections



1. heating outlet 5/4" OD
2. heating inlet 5/4" OD
3. electrical cables bushing  
4xPG21  
2xPG29

